

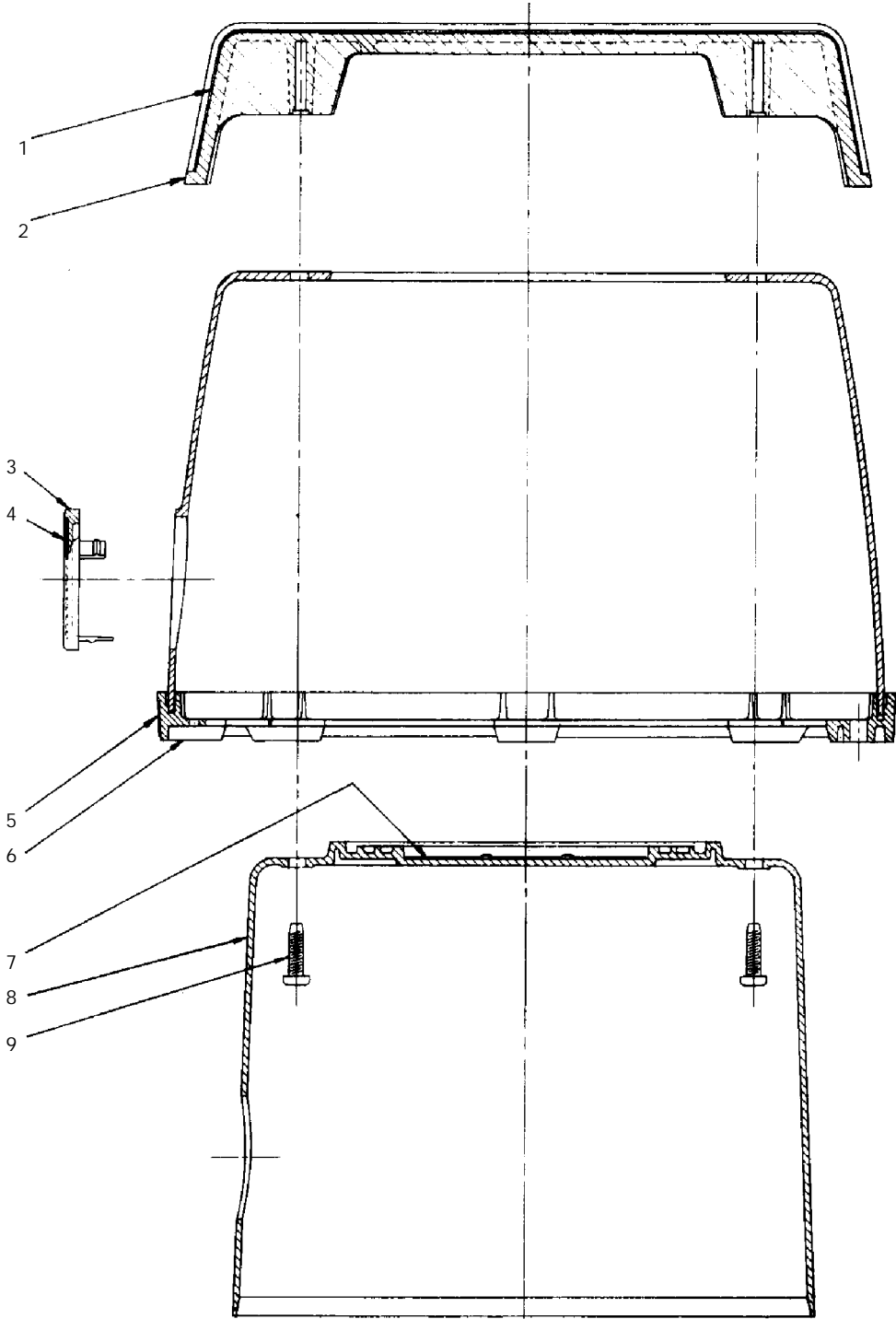
Rainbow[®] D3

SECTION V

Parts List & Illustrations D3 Attachments

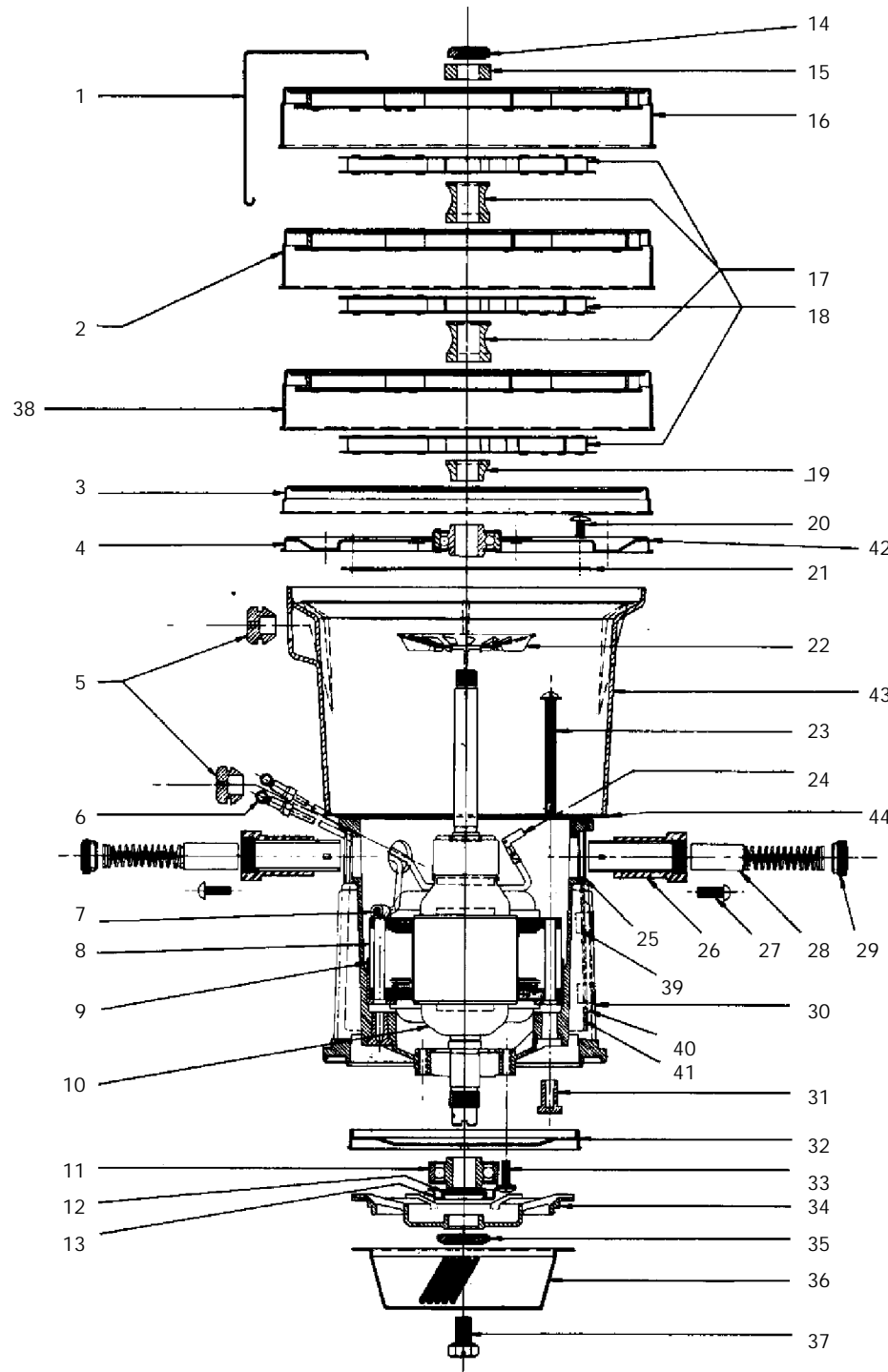
The Configuration Of The Rainbow Cleaning System And The Words "**RAINBOW**" And "REXAIR" Are Registered Trademarks Of Rexair, Inc., Troy, Michigan.

CAP AND CAP COVER ASSEMBLY

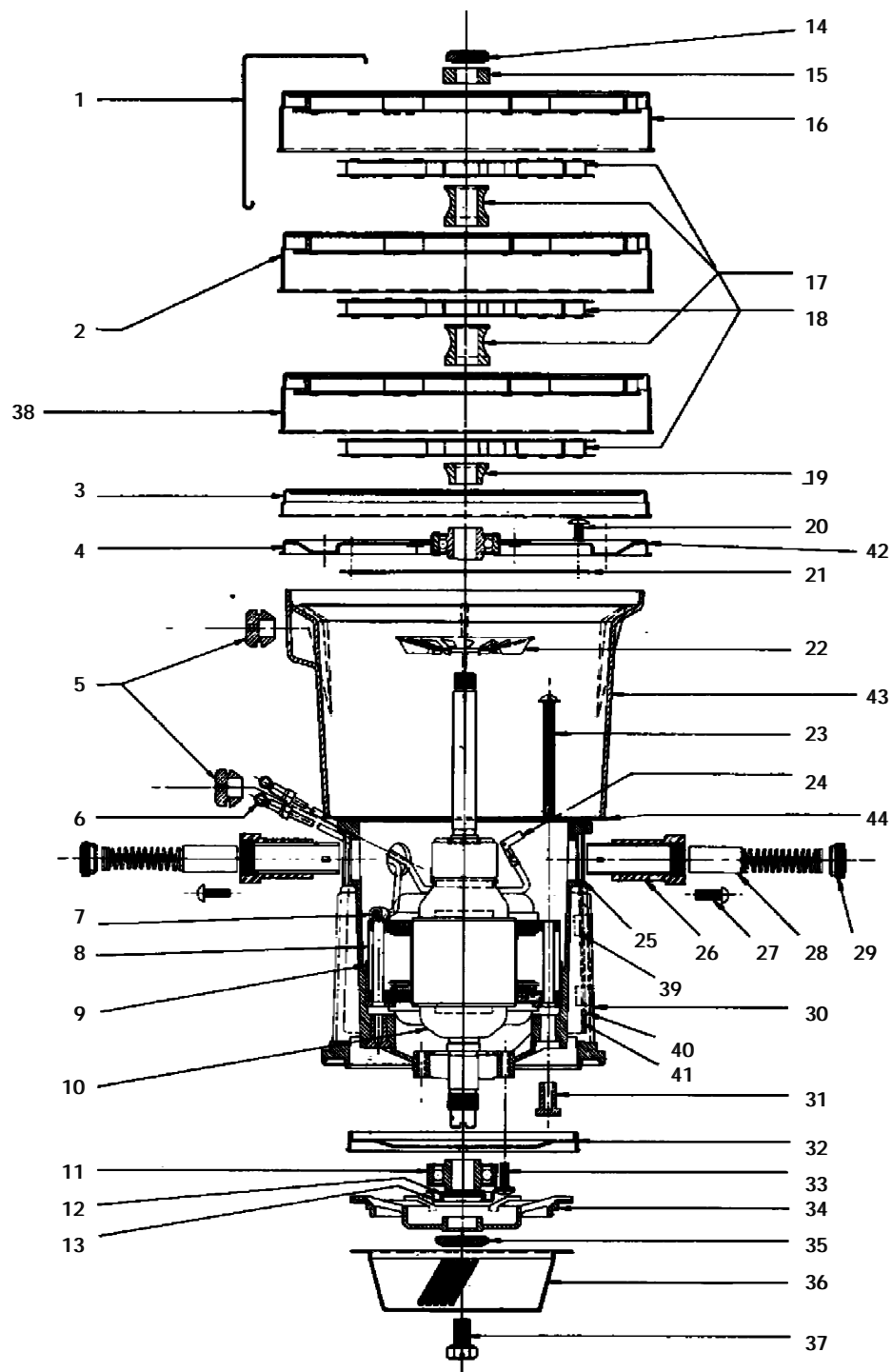


ITEM NO.	NO. REQ.	PART NO.	PART DESCRIPTION	PRICE
		R1530	Cap & Baffle Assembly	
1	1	R1567	Decal Handle	
2	1	R1574	Handle Assembly	
3	1	R2708	Closure Cover Assembly	
4	1	R1569	Closure Cover Decal	
5	1	R1568	Cap Ring Decal	
6	1	R1822	Cap & Cap Ring Assembly	
7	1	R1570	Rainbow - Baffle Decal	
8	1	R1573	Baffle Assembly	
9	2	H489	Cap Handle Screw (10's)	

PARTS AVAILABLE FOR MOTOR R-1767
 BEGINNING SERIAL NO. 4388126 START DATE
 6/30/80 REPLACED BY R-2104



ITEM NO.	NO. REQ.	PART NO.	PART DESCRIPTION	PRICE
1	3	R1423	Stage Housing Clip (5's)	
2	1	R1419	Stage Assembly	
3	1	R1418	Air Guide	
4	1	R1411	Bearing Plate Assembly	
5	2	R665	Grommet	
6	2	R1853	Terminal, Insulated	
7	1	H487	Cable Clamp (10's)	
8	1	R1435	Field Assembly (Revised - Up To Serial No. 4545550)	
	1	R2424	Field Assembly	
9	1	R1454	Field Insulator	
*10	1	R1426	Armature Assembly (Revised - See Note #1) Use W/R-1435	
	1	R1909	Armature Assembly (Up To Serial No. 4607200)	
11	1	R1180	Lower Bearing	
12	1	R147	Slinger Ring (10's)	
13	1	R146	Bearing Shield (10's)	
14	1	H306	Shaft Nut (10's)	
15	1	R1486	Spacer	
16	1	R1421	Stage Assembly, Upper	
17	2	R1417	Fan Spacer, Middle	
18	3	R675	Fan Assembly	
19	1	R1416	Fan Spacer, Lower	
20	8	H475	Screw, Bearing Plate (10's)	
21	1	R1415	Gasket, Bearing Plate	
22	1	R1469	Fan, Armature Cooling	
23	2	H535	Screw, Motor Field (10's)	
24	2	R1578	Terminal, Brush (Flag) (10's) (Revised)	
	2	R2423	Terminal, Brush (Eyelet) (10's)	
25	2	R1455	Gasket, Brush Holder (10's)	
26	2	R2490	Brush & Holder Kit	
27	4	H309	Screw, Brush Holder (10's)	
28	2	R1552	Carbon Brush & Spring	
29	2	R2420	Brush Holder (Prior to 9/84)	
30	1	R1448	Motor Housing	
31	2	R1449	Insulator, fld Scr Insert (10's)	
32	1	R1424	Air Deflector	
33	4	H308	Screw, Lower Bearing (10's)	
34	1	R1425	Spider	
35	1	H13	Shaft Nut (10's)	
36	1	R4100	Separator (Sold Separately)	
37	1	R3450	Separator Screw (5's) (Sold Separately)	



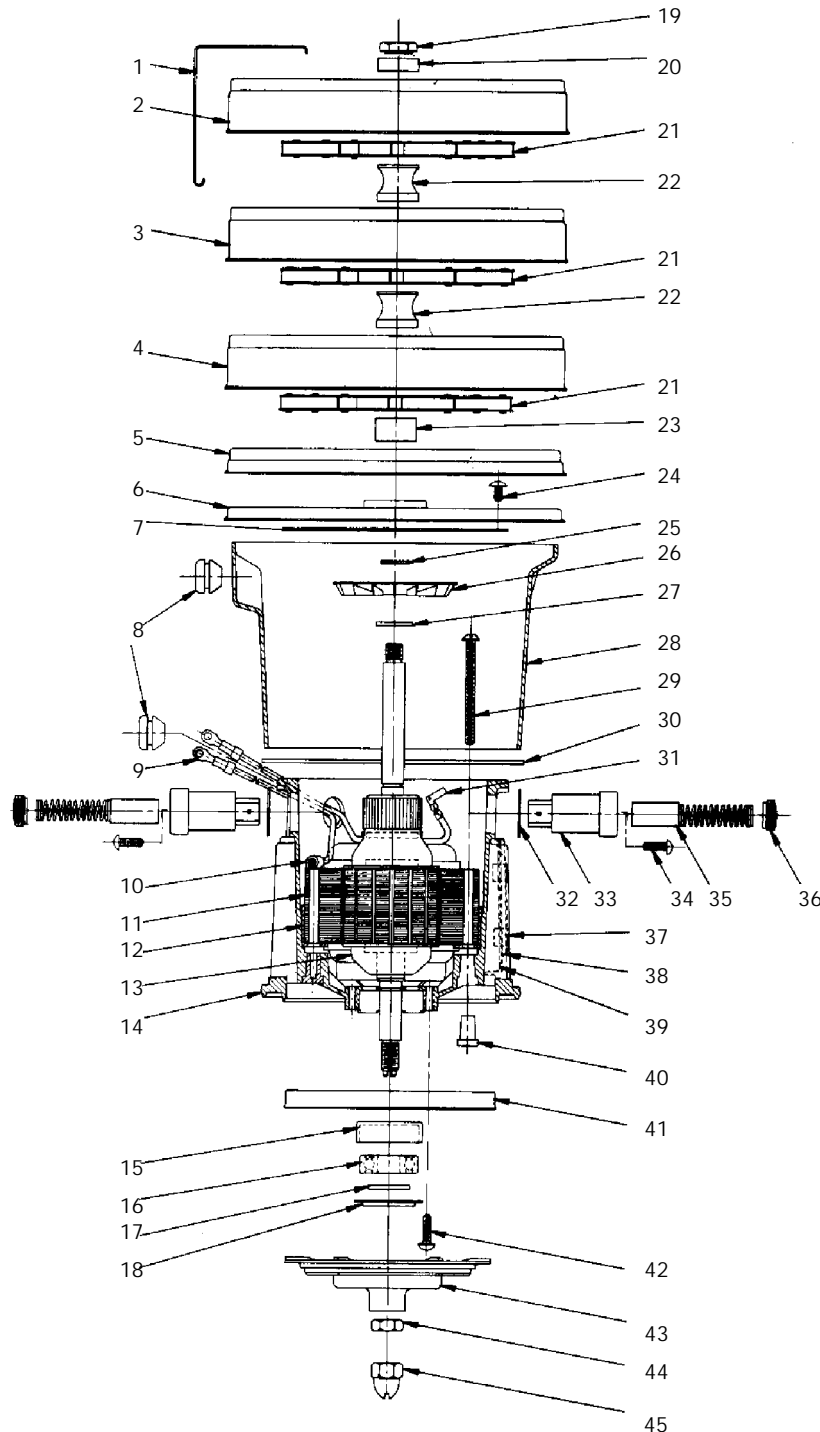
38	1	R1752	Stage Assembly (Lower W/ Ground)
39	4	R1473	Retainer, Cover Plate (5's)
40	2	R1471	Cover Plate (5's)
41	2	R1470	Gasket, Cover Plate (10's)
42	1	R1794	Gasket, Upper Shell
43	1	R1407	Shell Motor Housing
44	1	R1795	Gasket, Lower Shell

WHEN REPLACING R-1910 FIELD WITH R-2424, MUST INCLUDE R-2490 BRUSH AND HOLDER KIT.

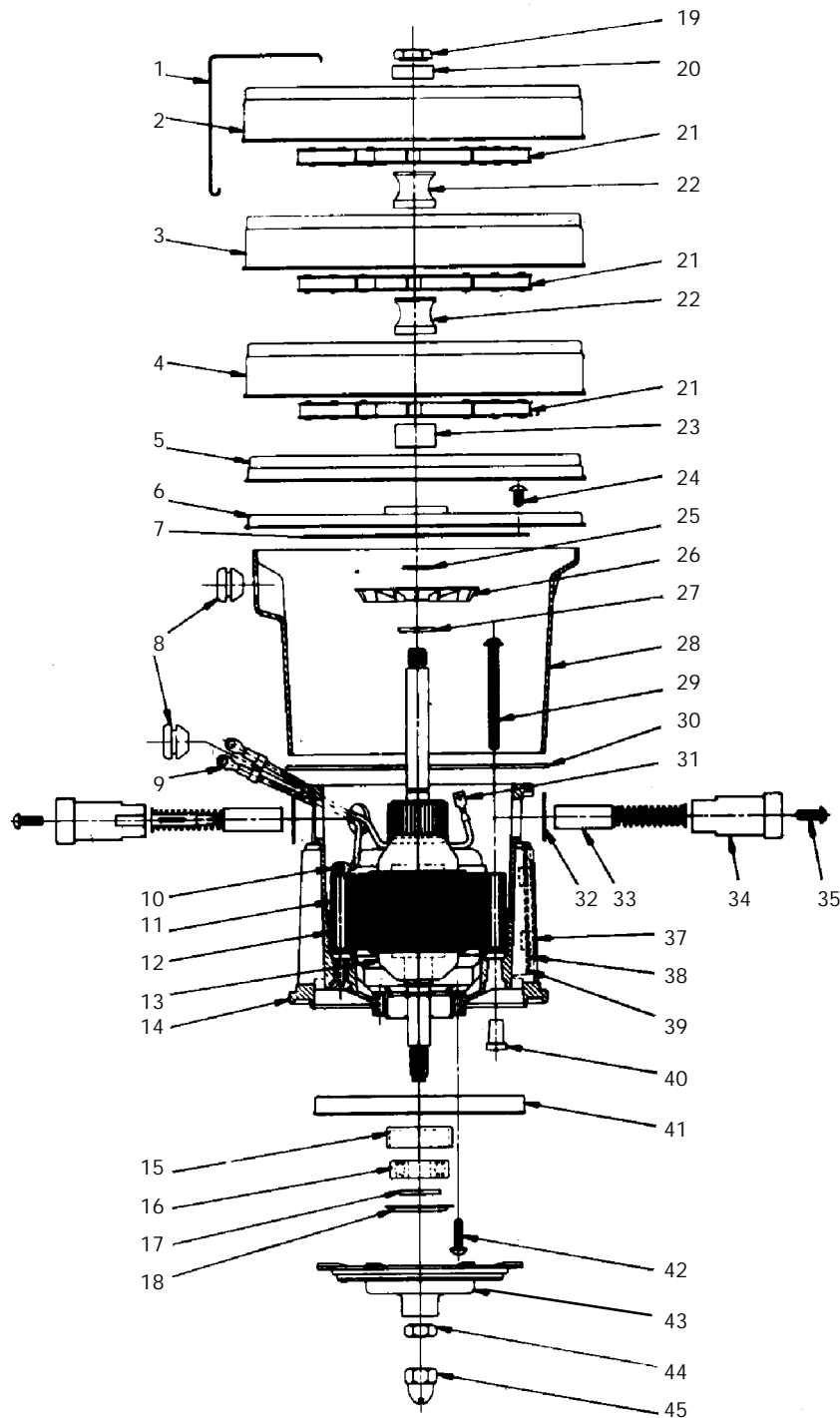
THE ARMATURE AND BEARING CONSTRUCTION WERE CHANGED IN ORDER TO PROVIDE A HIGH-QUALITY MOTOR BEARING. THE FOLLOWING PARTS CANNOT BE INTERCHANGED WITH PREVIOUS CONSTRUCTIONS:

ITEM NO.	PART DESCRIPTION
1	ARMATURE ASSEMBLY
2	BEARING PLATE ASSEMBLY
3	BALL BEARING
4	BEARING BOOT
5	SPIDER
6	BEARING SHIELD
7	SLINGER RING
8	LOCK NUT (SPIDER)
9	ACORN NUT (SEPARATOR)
10	FAN (MOTOR)
11	FAN SPACER
12	RETAINING RING
13	FAN SPACER, LOWER
14	FAN SPACER, MIDDLE
15	FAN SPACER, UPPER
16	FAN ASSEMBLY

REPLACEMENT MOTOR R-2104
 BEGINNING SERIAL NO. 4607000
 START DATE 6/05/82



ITEM NO.	NO. REQ.	PART NO.	PART DESCRIPTION	PRICE
	1	R2104	Packed Service Motor Asm.	
1	3	R1423	Stage Housing Clip (5's)	
2	1	R1421	Stage Assembly, Upper	
3	1	R1419	Stage Assembly, Middle	
4	1	R1752	Stage Assembly (Lower W/ Ground)	
5	1	R1418	Air Guide	
6	1	R1991	Bearing Plate Assembly	
7	1	R1415	Gasket, Bearing Plate	
8	2	R665	Grommet	
*9	2	R1642	Terminal, Insulated (Revised - See Revision #3)	
	2	R1853	Terminal, Insulated (After Serial No. 4838444 & Serial No. 4826642 - 4830159)	
10	1	H487	Cable Clamp (10's)	
*11	1	R2424	Field Assembly	
12	1	R1454	Field Insulator	
13	1	R1974	Armature Assembly	
14	1	R1448	Motor Housing	
15	1	R1987	Bearing Boot	
16	1	R1981	Ball Bearing	
17	1	R1979	Slinger Ring (10's)	
18	1	R1980	Bearing Shield (10's)	
19	1	H306	Shaft Nut (10's)	
20	1	R1984	Fan Spacer, Upper	
21	3	R1978	Fan Assembly	
22	2	R1983	Fan Spacer, Middle	
23	1	R1982	Fan Spacer, Lower	
24	8	H475	Screw, Bearing Plate (10's)	
25	1	H523	Retaining Ring (10's)	
26	1	R1975	Fan, Armature Cooling	
27	1	R2107	Fan Spacer (5's)	
28	1	R1407	Shell Motor Housing	
29	2	H535	Screw, Motor Field (10's)	
30	1	R1795	Gasket, Lower Shell	
31	2	R2423	Terminal, Brush (10's)	
32	2	R1455	Gasket, Brush Holder (10's)	
33	1	R2490	Brush Holder Kit - Includes - R-2420 Brush Holder R-2421 Motor Brush R-2423 Field Terminal	



33	1	R2421	Motor Brush (After Serial No. 4838444 & Serial No. 4826642 - 4830159)
34	1	R2420	Brush Holder (After Serial No. 4838444 & Serial No. 4826642 - 4830159)
35	4	H309	Screw, Brush Holder (10's)
36	2	R2420	Brush Holder (Prior to 9/84)
37	4	R1473	Retainer, Cover Plate (5's)
38	2	R1471	Cover Plate (5's)
39	2	R1470	Gasket, Cover Plate (10's)
40	2	R1449	Insulator, Fld Scr Insert (10's)
41	1	R1424	Air Deflector
42	4	H308	Screw, Lower Bearing (10's)
43	1	R4101	Spider
44	1	H526	Lock Nut Spider (10's)
45	1	H524	Acorn Nut (5's) (Sold Separately)
*46	1	R4100	Separator (Sold Separately)

*Not Shown

If machine being serviced has old - style R - 1552 carbon brushes or R - 2421 motor brush and R - 2420 brush holder, you must purchase R - 2490 brush holder kit.

THE ARMATURE AND BEARING CONSTRUCTION WERE CHANGED IN ORDER TO PROVIDE A HIGH-QUALITY MOTOR BEARING. THE FOLLOWING PARTS CANNOT BE INTERCHANGED WITH PREVIOUS CONSTRUCTIONS:

ITEM NO.	PART DESCRIPTION
1	ARMATURE ASSEMBLY
2	BEARING PLATE ASSEMBLY
3	BALL BEARING
4	BEARING BOOT
5	SPIDER
6	BEARING SHIELD
7	SLINGER RING
8	LOCK NUT (SPIDER)
9	ACORN NUT (SEPARATOR)
10	FAN (MOTOR)
11	FAN SPACER
12	RETAINING RING
13	FAN SPACER, LOWER
14	FAN SPACER, MIDDLE
15	FAN SPACER, UPPER
16	FAN ASSEMBLY

D3 ATTACHMENTS

ITEM NO.	PART NO.	PART DESCRIPTION	PRICE
1	R933	Straight Wand	
2	R8407	Curved Wand	
3	R2792	Suction Control Sleeve	
4	R934	Bottom Wand	
5	R8058	Floor Tool Assembly	
6	R188	Floor Tool Bristles	
7	R587	Floor Tool Guard	
8	R2005	Floor Tool Body – Lower	
9	R2006	Floor Tool Body – Upper	
10	H528	Screw (10's) (For Floor Tool)	
11	R8056	Crevice Tool	
12	R1730	Attachment Caddy	
13	R12439	Dusting Brush Assembly (Replaced R588)	
14	R192	Dusting Brush Bristles	
15	R12438	Dusting Brush Back (Replaced R589)	
16	R8055	Upholstery Tool Assembly	
17	R900	Upholstery Tool Brush	
18	R1847	Upholstery Tool Body	
19	R841	Separator Brush	
20	R6621	Hose Assembly, 9– Yarn	
21	R414049	Dolly Assembly Complete	
22	R4140	Dolly W/O Casters	
23	R1897	Dolly Casters (twin) (4's)	
24	R3251	Dolly Applique	
25	R1764	Operation Manual	
26	R1819	Attachment Kit	

*All Items Not Shown