

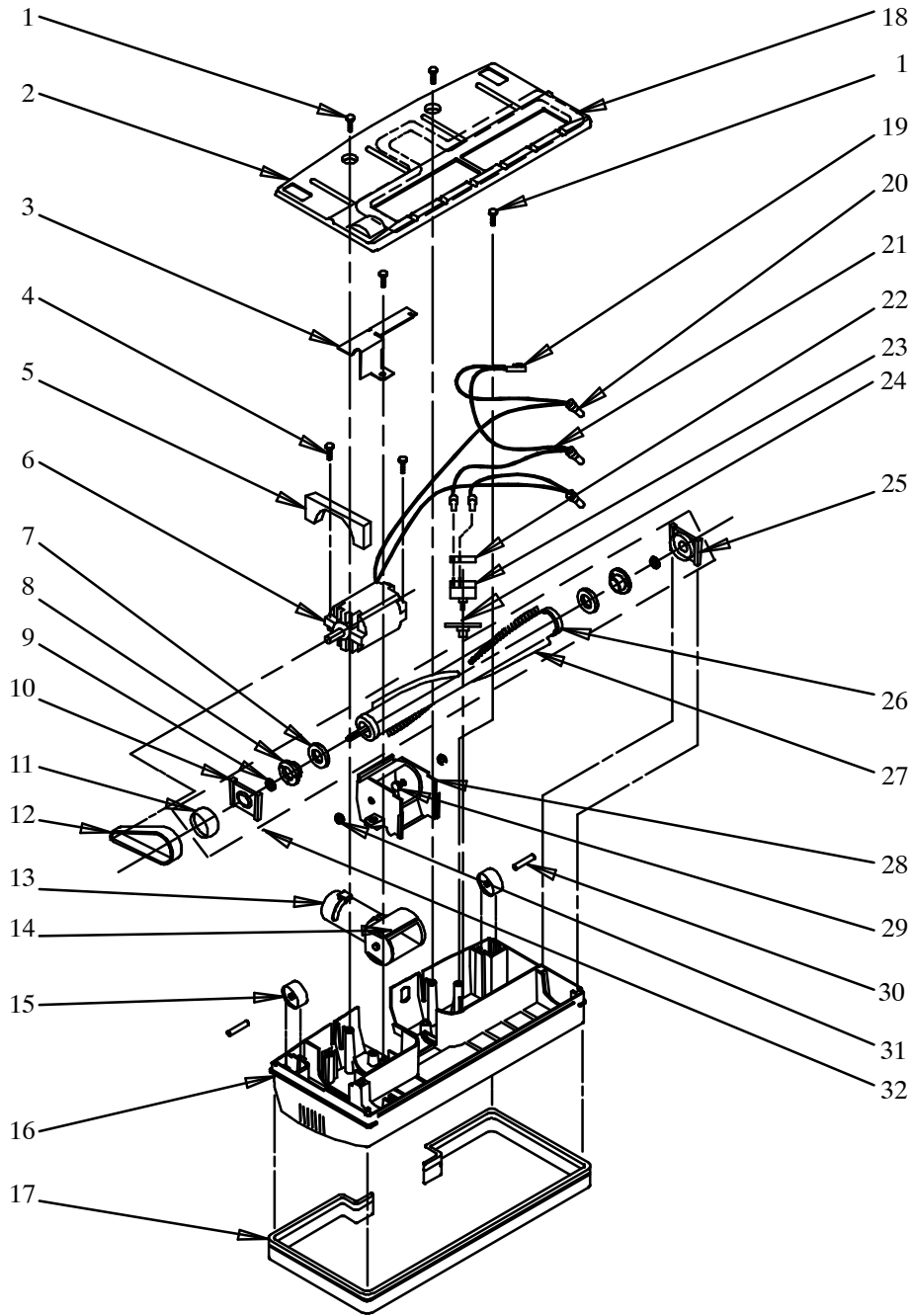


Rainbow SE
Power Nozzle

MODEL R-4375C
Beginning Serial Number 5000000

THE CONFIGURATION OF THE RAINBOW CLEANING SYSTEM AND THE WORDS "RAINBOW" AND "REXAIR" ARE REGISTERED TRADEMARKS OF REXAIR, INC., TROY, MICHIGAN.

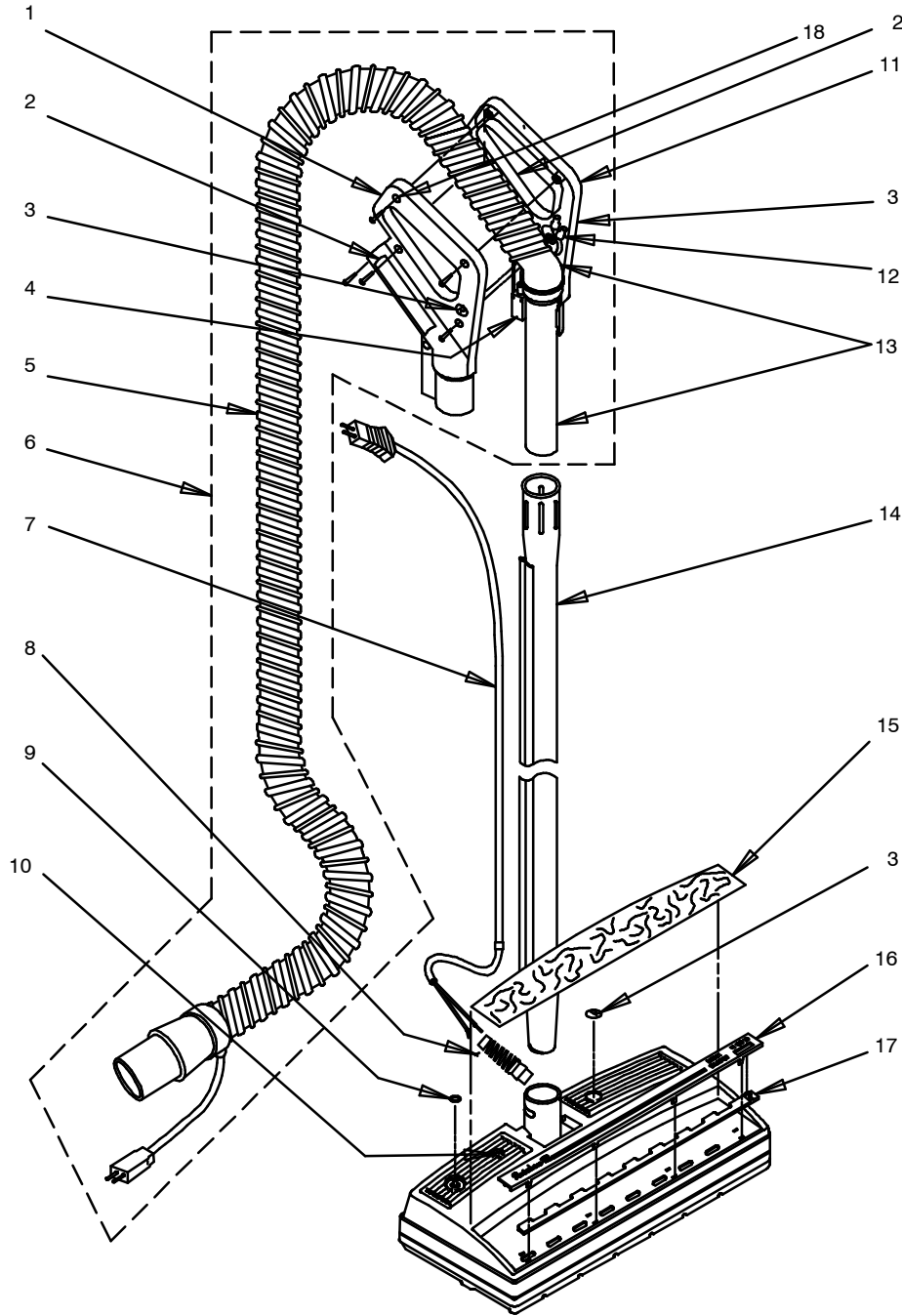
POWER NOZZLE ASSEMBLY (INTERNAL VIEW)



ITEM NO.	NO. REQ.	PART NO.	PART DESCRIPTION	PRICE
1	4	H515	#10-16x.62 Plascrow (10's)	
2	1	R2004	Sole Plate Assembly	
3	1	R1997	Insulator	
4	2	H552	#6-10x1.00 Screw (10's)	
5	1	R1813	Air Barrier	
6	1	R1871	Motor Assembly	
		R4662	Power Nozzle Brush (10's)	
		R4663	Power Nozzle Rear Bearings (5's)	
7	2	R1692	Brush Assembly Seal (10's)	
8	2	R1691	Brush Assembly Keeper	
9	4	R1698	Thrust Washer (10's)	
10	4	R2443	End Cap	
11	1	R3472	Power Nozzle Pulley Assembly	
12	1	R1699	Drive Belt	
13	1	R2801	Pivot Arm Assembly	
14	1	R2069	Felt Pad	
15	2	R1703	Power Nozzle Wheel	
16	1	R4989	Main Housing Assembly	
17	1	R2795	Power Nozzle Bumper	
18	2	R2003	Sole Plate Gasket	
19	1	R1818	Pilot Light Assembly	
20	3	R1775	Closed End Splice (10's)	
21	2	R1754	Lead Assembly	
22	1	R1780	Insulator Circuit Breaker	
23	1	R8452	Circuit Breaker, 120V, 2.5 Amp (Replaced R-4291)	
24	1	R4290	Circuit Breaker Adapter Plate	
25	2	R1744	Bearing Assembly	
26	1	R1690	Brush Assembly	
27	1	R1695	Beater Bar	
28	1	R2803	Pivot Housing	
29	2	R1996	Clevis Pin (10's)	
30	2	R1704	Power Nozzle Wheel Pins (5's)	
31	2	H527	"E" Ring (10's)	
32	1	R1866	Complete Brush & Brg. Asm.	
*33	1	R3300	Pivot Arm & Housing Asm.	
*34		R4292	Circuit Breaker Kit (Required For R-4989)	

*Not Shown

POWER NOZZLE ASSEMBLY (EXTERNAL VIEW)



ITEM NO.	NO. REQ.	PART NO.	PART DESCRIPTION	PRICE
1	1	R4295	R.H. Handle Assembly - Includes - R-2521 Rexair Logo R-4294 Warning Label	
2	2	R4294	Warning Label	
3	3	R2521	Rexair Logo	
4	1	R4122	Receptacle	
5	1	R6055	Electrified Hose Assembly	
6	1	R4147	Electrified Hose & Handle Asm.	
7	1	R4121	Power Nozzle Cord	
8	1	R4053	Strain Relief Bushing (5's)	
9	1	H568	Circuit Breaker Panel Nut	
10	1	R1818	Pilot Light Assembly	
11	1	R4296	L.H. Handle Assembly - Includes - R-2521 Rexair Logo R-4294 Warning Label	
12	2	R1775	Closed End Splice (10's)	
13	1	R4109	Handle Insert Assembly - Includes - R-8142 Handle Insert R-4113 P/N Handle Wand	
14	1	R5066	Straight Wand Assembly	
15	1	R4200	Power Nozzle Applique	
16	1	R2775	Slide Valve Guide Assembly	
17	1	R1990	Slide Valve	
18	6	H566	#5 x .50 Screw (10's)	
*19	1	R4183	Operation Manual	
*20	1	R3520	Cord Guide Replacement Kit	
*21	1	R3113	Warning Label	

*Not Shown